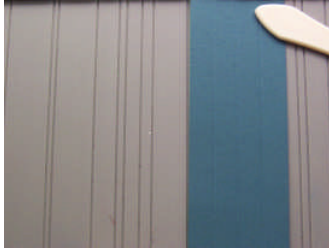


Single Layer Pop-up Card

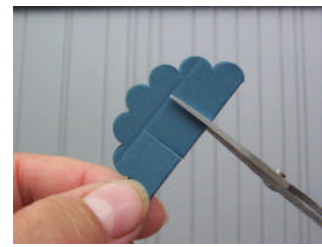
Use your scallop punch to turn your favourite card into a pop-up. This will also work with Stampin' Up's large circle, square and tag punch



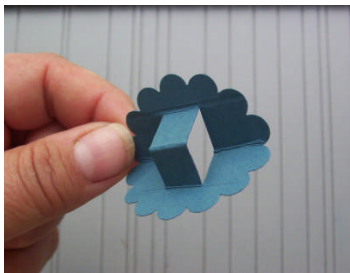
1. Score a 2" scrap of cardstock at 1/2", 1" and 1 1/2".



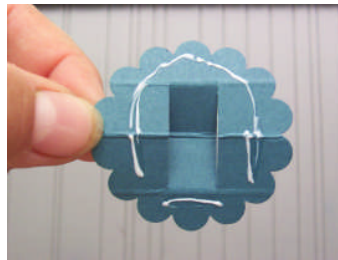
2. Centre the middle score line and punch out a scallop.



3. Fold in half on centre score line and make 2 small cuts about 1/2" apart up to the outer score line.



4. Pop the centre forward as shown in the above photo.



5. On the back of your scallop, glue around the outside only. **Do not** get glue on the centre piece.



6. Line up the fold on the scallop with the fold of your card and glue in place.



7. Put a dot of glue on the bottom centre piece that's sticking out.



8. Attach the piece you want to pop up to your dot of glue.