

# Spring Watercolour Class

Created by Jackie Topa



## Supplies

Watercolor Pencils

Watercolor Wonder Crayons (Earth Elements)

Aqua Painter

Blender Pen

Jet Black Stazon Ink

Tempting Tuquois, Regal Rose, Summer Sun, More Mustard and Pumpkin Pie Stampin' Write Markers

Write Markers

Summer Sun Classic Ink Pad

Watercolour Paper (Cut four pieces 2" x 2-1/2" and one piece 3" x 3")

Tempting Turquoise Cardstock (Cut four pieces 2" x 2-3/4" and one piece 3-1/4" x 3-1/4")

Certainly Celery Cardstock (Cut two pieces 3" x 6")

Regal Rose Cardstock (Cut two pieces 3" x 6")

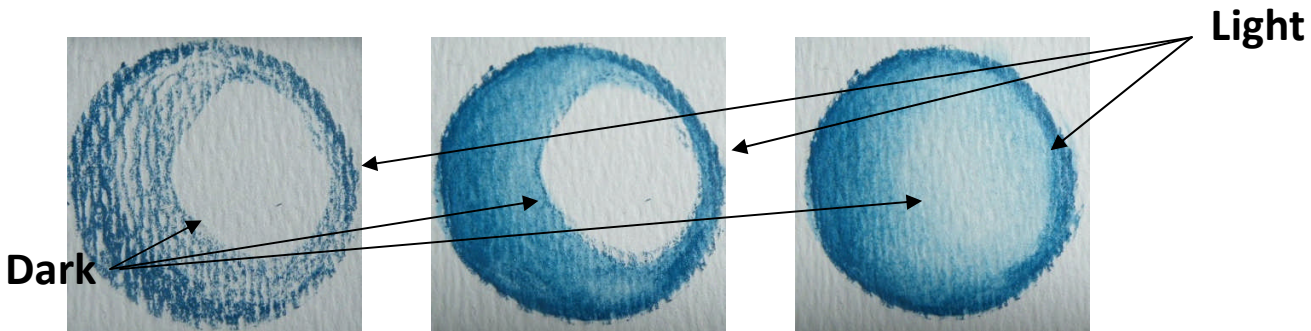
Regal Rose Cardstock (Cut 6" x 11")

Wagon Full of Fun Stamp Set



To make the Pizza Box score the 6" x 11" Regal Rose Cardstock @ 1", 5", 6" and 10" and 1" down both long sides.

Cut on each of the score lines along the long sides stopping at the vertical score lines. Fold up like a pizza box and tape the corners with sticky strips.



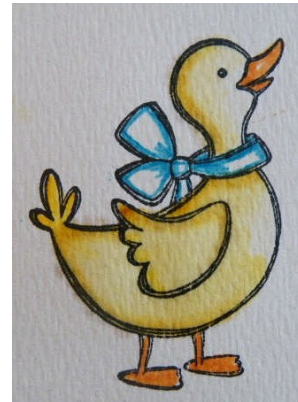
To shade an object imagine where light and shadow would fall. The shaded area would be coloured the darkest, leave a white area where the light would fall and blend the two areas until you achieve the look you want.



Colour the Flower Pot with Watercolour Wonder Crayons. Blend the small areas with a blender pen and the large areas with the aqua painter.



Squeeze the Summer Sun Classic Ink Pad to get some ink in the lid. Pick up some colour with your aqua painter and starting on the dark side colour the duck. Add some colour with the thick end of the Summer Sun Stampin' Write Marker. Blend the colour in with your aqua painter.



Add more colour with the wide end of the More Mustard Stampin' Write marker and blend with your aqua painter. Colour the duck's bow with the Tempting Turquoise Stampin' Write Marker and the duck's bill and feet with the Pumpkin Pie Stampin' Write Marker. Blend with the Aqua Painter.



Shade the cupcake with the Watercolor Pencils as shown above. Blend the larger areas with the aqua painter and the smaller areas with a blender pen.



Draw on the lines of the heart with the pink Watercolor Pencils and blend with a blender pen or aqua painter pulling the colour from the outer edges to the centre.

For the shadow, draw a blue line around the outside of the heart and blend.

Colour the Rose and Leaves with the Pencils but don't blend.